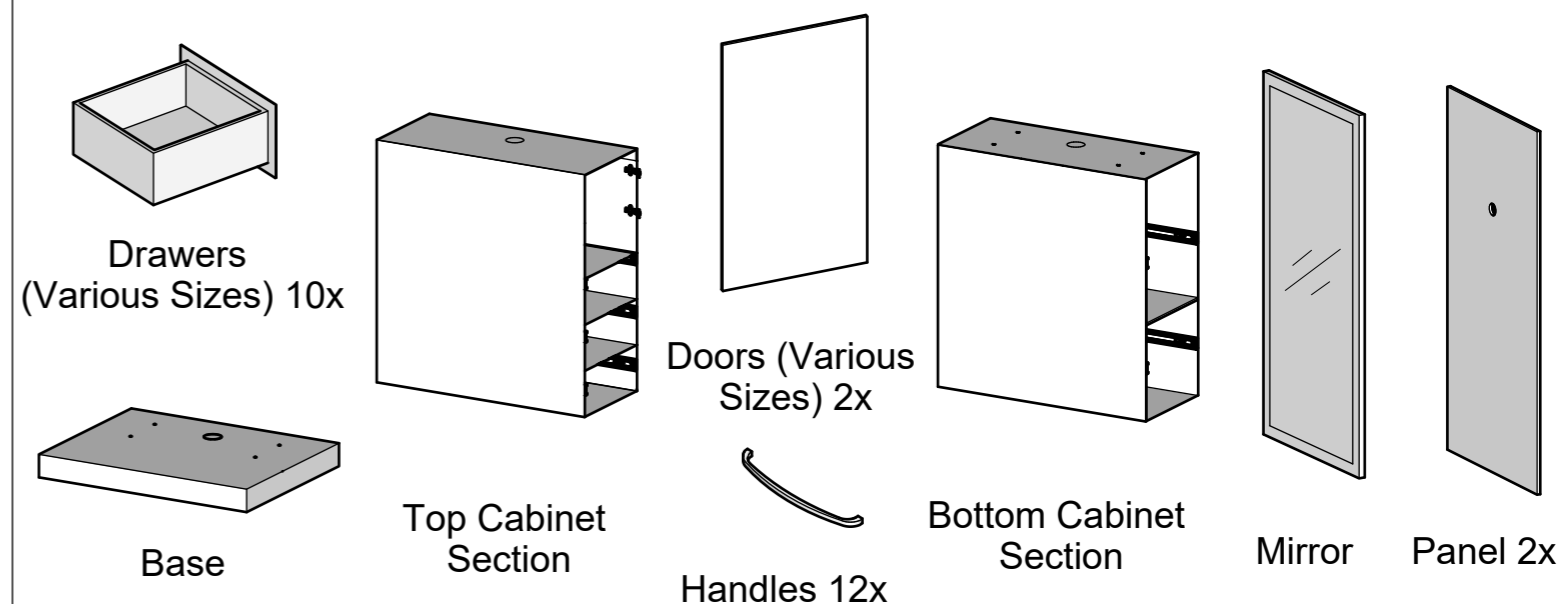
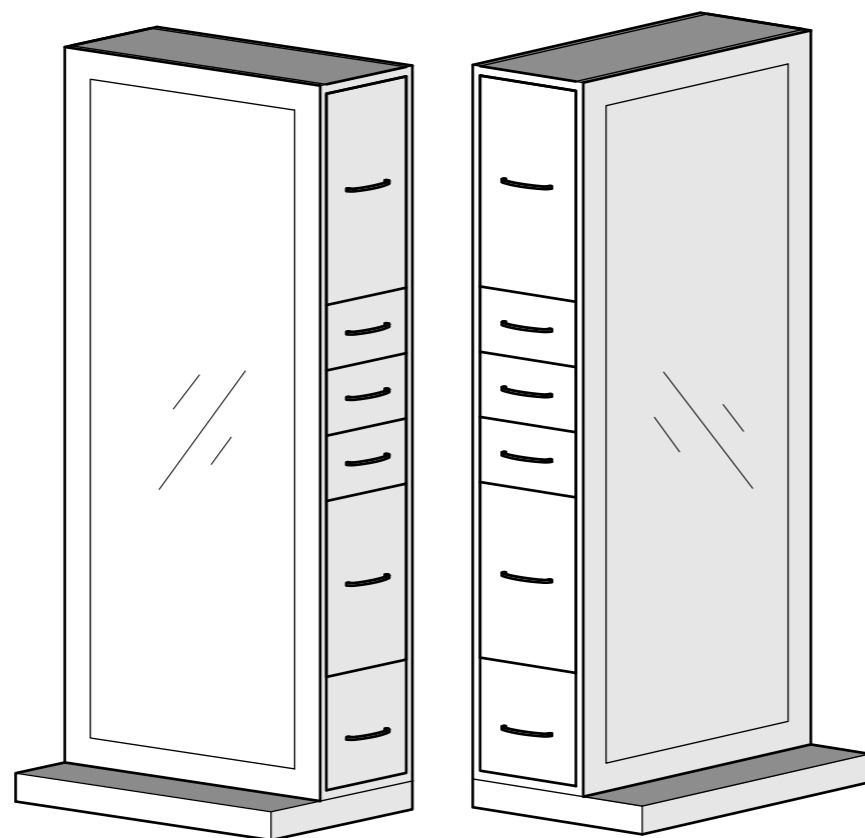




Genesis Single Sided  
LED Styling Station  
Model # 3393-LED



## Pre-Assembly

1. Remove all parts and hardware from the box. Place them on a carpeted or scratch-free work surface, as this will avoid damaging parts during assembly. The shipping box provides an ideal work surface.
2. To avoid accidentally discarding small parts or hardware, do not dispose any packaging or contents of the shipping carton until assembly is complete.
3. Use the parts and hardware list on the left to identify and separate all of the pieces included.
4. The illustrations provided allow for easier assembly when used in conjunction with the assembly instructions.
5. The use of power tools to aid in assembly is not recommended. Power tools can damage hardware and split wood.

## PARTS LIST

A	4x		Short Allen bolts (8x20) or (M8x25)
B	4x		Short Allen bolts (M8x22) or (M8x18)
C	16x		Allen bolts
D	20x		Washer Set
E	10x		Appliance rings

\*\*Open all drawers and boxes to  
check for parts before beginning  
assembly

### Tools required:

Allen wrench (Included)

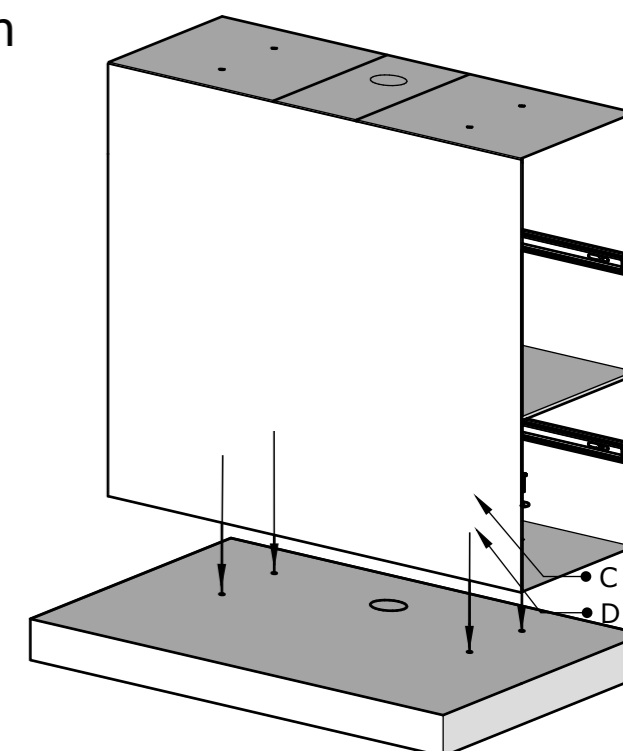
S

M

Phillips-head screwdriver (Not included)

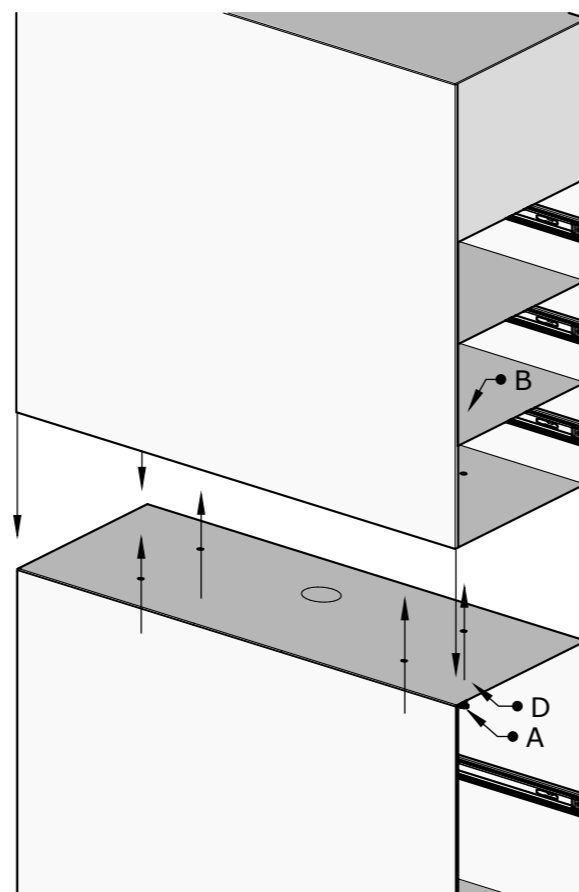
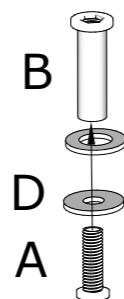
## 1 Mounting bottom cabinet section

1. Remove all the drawers from the bottom cabinet section by pressing the black release tabs in the glides (one up, one down) and pulling. Remove the drawers slowly and carefully so as not to damage the glides.
2. Set the bottom cabinet section on top of the base, aligning the 4 holes in each.
3. Secure the bottom cabinet section to the base using 4 short Allen bolts (c) and washer sets (D).



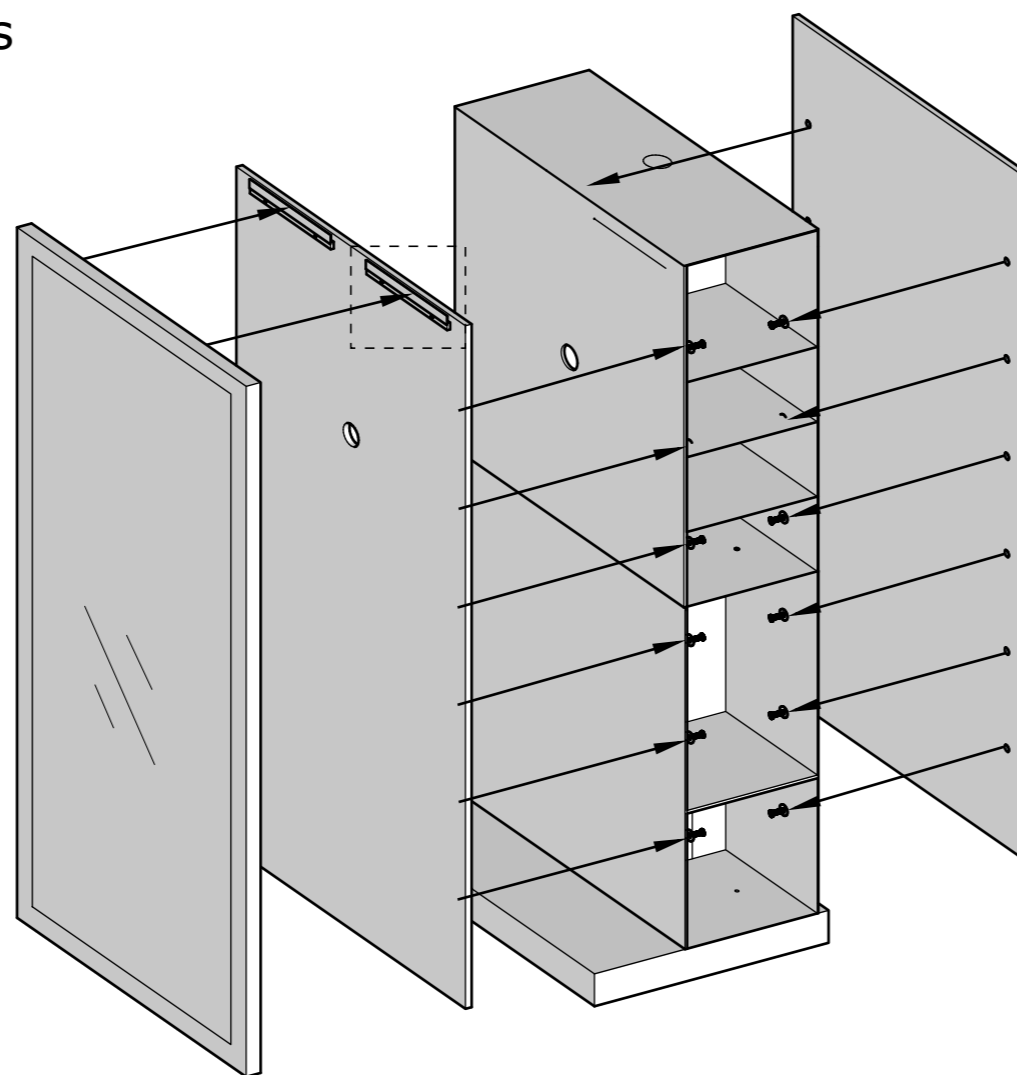
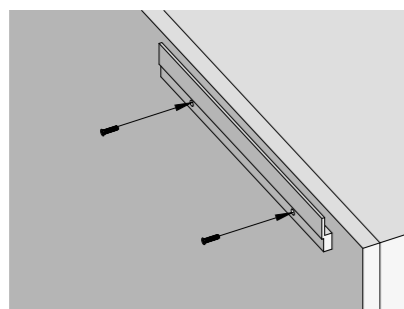
## 2 Mounting top cabinet section

1. Remove all the drawers from the top cabinet section by pressing the black release tabs in the glides (one up, one down) and pulling gently. Lay drawers out in proper order for replacement.
2. Set the top cabinet section on top of the bottom cabinet section, aligning the 4 holes in each.
3. Secure the top section by screwing the 4 remaining short Allen bolts (A+D+B) upward through both cabinet sections into the anchors in the top section



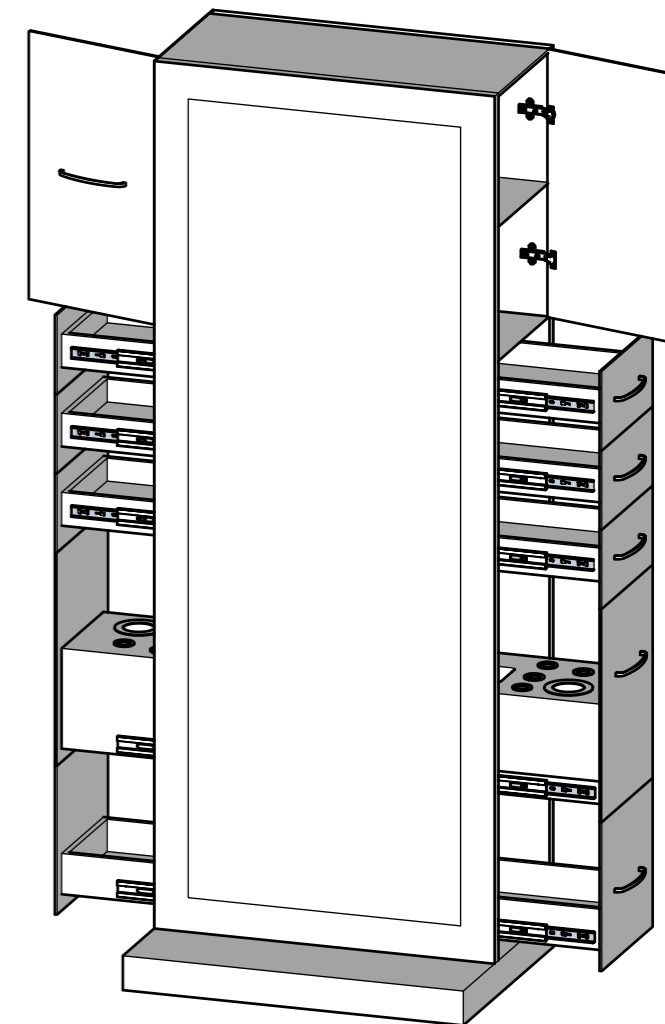
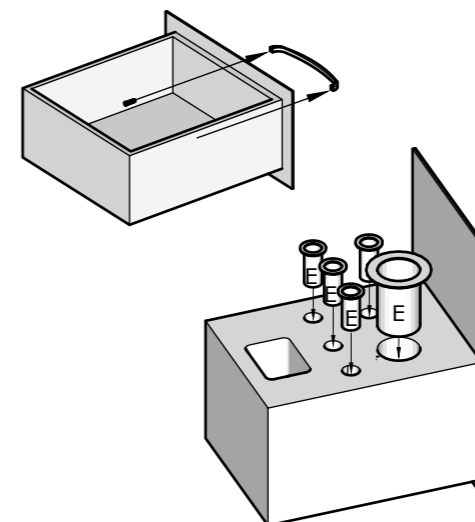
## 3 Mounting the mirror panels

1. Attach the front and back panels securely by screwing them tightly to both the upper and base cabinets.
2. Mount each bracket to the front of the Panel. The bracket needs to be mounted flush to the top of the upper cabinet.
3. The mirror frame located at the back will hang on the bracket.



## 4 Finishing Touches

1. For shipping, the drawer handles are on a separate box
2. Drop the metal appliance rings (E) into the holes in the appliance drawers.
3. Slide the drawers back into their respective glides.



### Important Safety Instructions

- Please read all instructions carefully before assembling this desk.
- For your safety, assembly by two or more adults is strongly recommended.
- Keep these instructions for future use.
- Use only vendor supplied hardware to assemble this item. Using unauthorized hardware could jeopardize the structural integrity of the item.

### Care Instructions

- Dust often using a clean, soft, dry and lint-free cloth.
- Blot spills immediately and wipe with a clean, damp cloth.
- We do not recommend the use of chemical cleansers, abrasives, or furniture polish on our lacquered finish.
- Hardware may loosen overtime. Periodically check to make sure all connections are tight. Re-tighten if necessary.